



6 Howard Place, Dunstable, LU5 4AA

An immaculate and well presented three bedroom family home located in the popular residential area of Howard Close, Dunstable.

The property offers spacious and versatile accommodation throughout, comprising two reception rooms, a modern fitted kitchen and a convenient downstairs WC. To the first floor are three well proportioned bedrooms and a contemporary family bathroom.

Further benefits include a driveway to the front providing off road parking for up to three vehicles, as well as a private rear garden, ideal for families and outdoor entertaining.

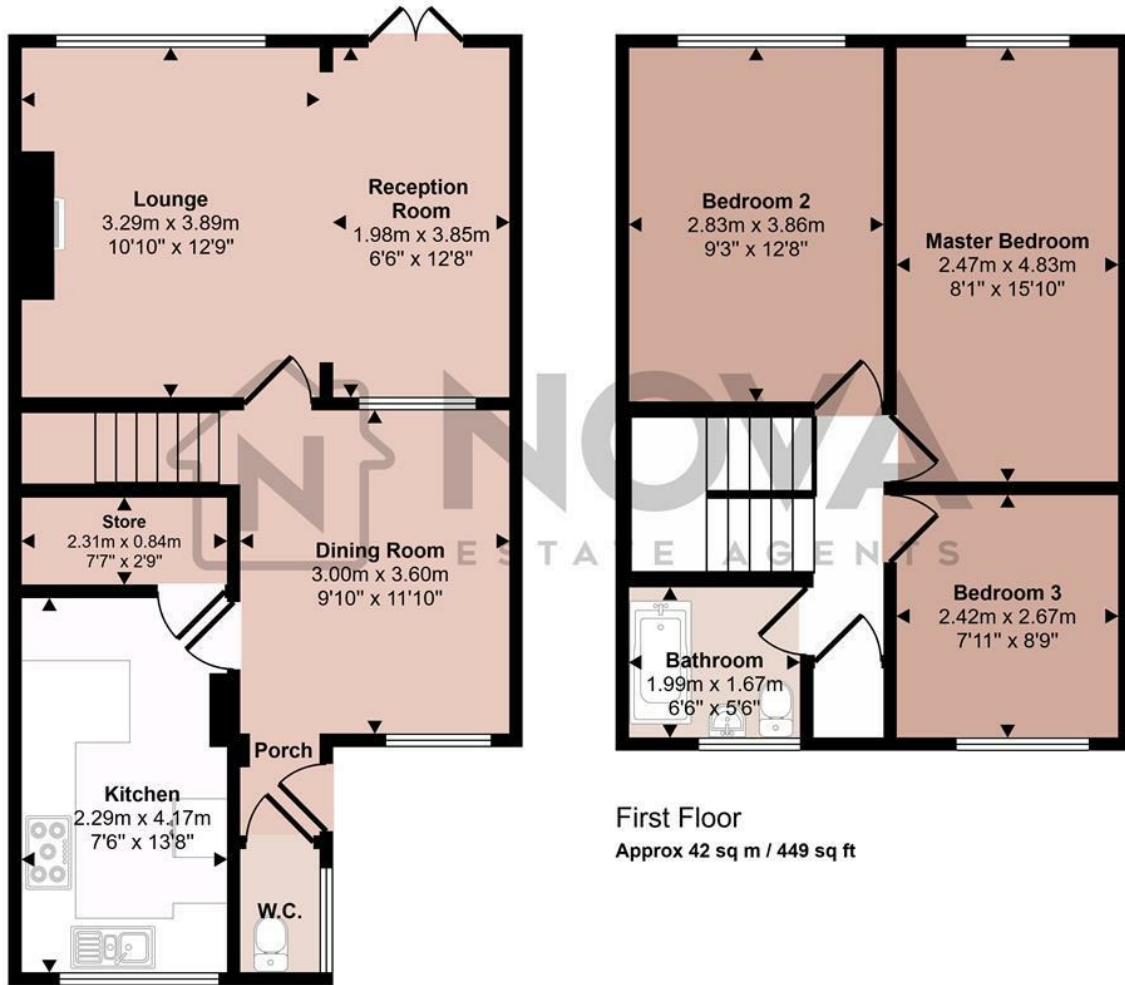
Situated in a quiet cul-de-sac, the property is conveniently located for local schools, amenities and transport links.

Early viewing is highly recommended to fully appreciate the standard and space this property has to offer. Call Nova Estate Agents to arrange a viewing.

£1,550 Per month

- Nova Estate Agents
- Press Play Button For 360° Walkaround Tour
- Available Now
- Unfurnished
- Driveway for 3 Cars
- 3 Bedroom
- 2 Large Reception Rooms
- Downstairs WC
- Close To Amenities
- Redecorated Internally

Approx Gross Internal Area
92 sq m / 985 sq ft



Ground Floor

Approx 50 sq m / 536 sq ft

This floorplan is only for illustrative purposes and is not to scale. Measurements of rooms, doors, windows, and any items are approximate and no responsibility is taken for any error, omission or mis-statement. Icons of items such as bathroom suites are representations only and may not look like the real items. Made with Made Snappy 360.

